

GREEN
WITH
ENVY

TOP
DISTINCTION

Controlled
CONTRAST

JANOURAS

www.janouras.com

editor's note

We at Janouras pride ourselves in being able to reinvent traditional approaches to corporate fashion. As the region's premier corporate wear provider, customers continually look to our team for ideas and tips toward creating that distinct look. This year we have focused on the inner blouse and ways of making this often-forgotten piece the statement of your uniform. In addition, contrast remains a popular trend for the working woman and our design team has looked at ways of using this fashionable feature to design styles that flatter and complement everyone.

Continuous upgrading to our plant's facilities has proven to be beneficial in terms of improving our production figures as well as our quality control procedures. Special emphasis has also been placed on upgrading pattern-making software to ensure that alterations are carried out accurately and efficiently. Our newest initiative is to recruit and train talent through our Janouras Teaching Facility. This ensures sustainability within our growing work force so that we can continue to meet commitments to our customers. With each year that comes, we continue to strive toward improved standards and a final product that exceeds expectations!

**We don't outfit people,
we make them look good!**

**We would like to thank our talented and
dedicated photographers:**

Dos Imagery - www.dosimagery.com
& Lisa Holley Photography

JANOURAS

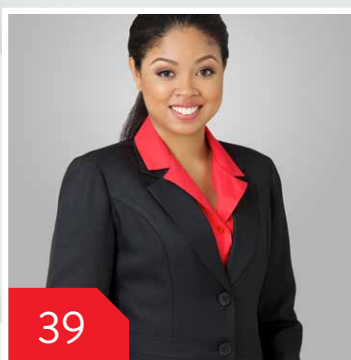
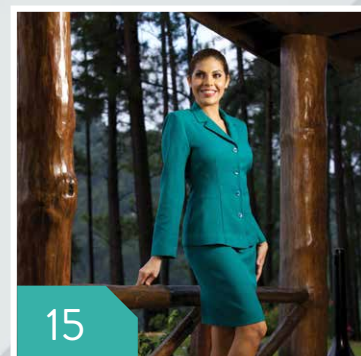
THE SKY IS THE LIMIT



JANOURAS

contents

Controlled Contrast	7
Green with Envy	15
5 Days 5 Ways	19
Top Distinction	27
The Versatile Jacket	39
Flare Play	53



EMERALD
CITY



Add some GLAMOUR to your work wardrobe!

This collection includes feminine features such as the notched neckline and fashionable peplum.





CONTROLLED CONTRAST

Subtle hints of contrast as colour-blocking is phased out.

While contrast remains a popular trend for corporate wear, the distinctiveness of colour blocking has slowly given way to the subtlety of toning shades.









MOCHA
MAGIC



*Subtle
contrast
creates a
unified look*





FINISHING TOUCH

Just a
simple
touch of
contrast
piping can
enhance
your
corporate
look.

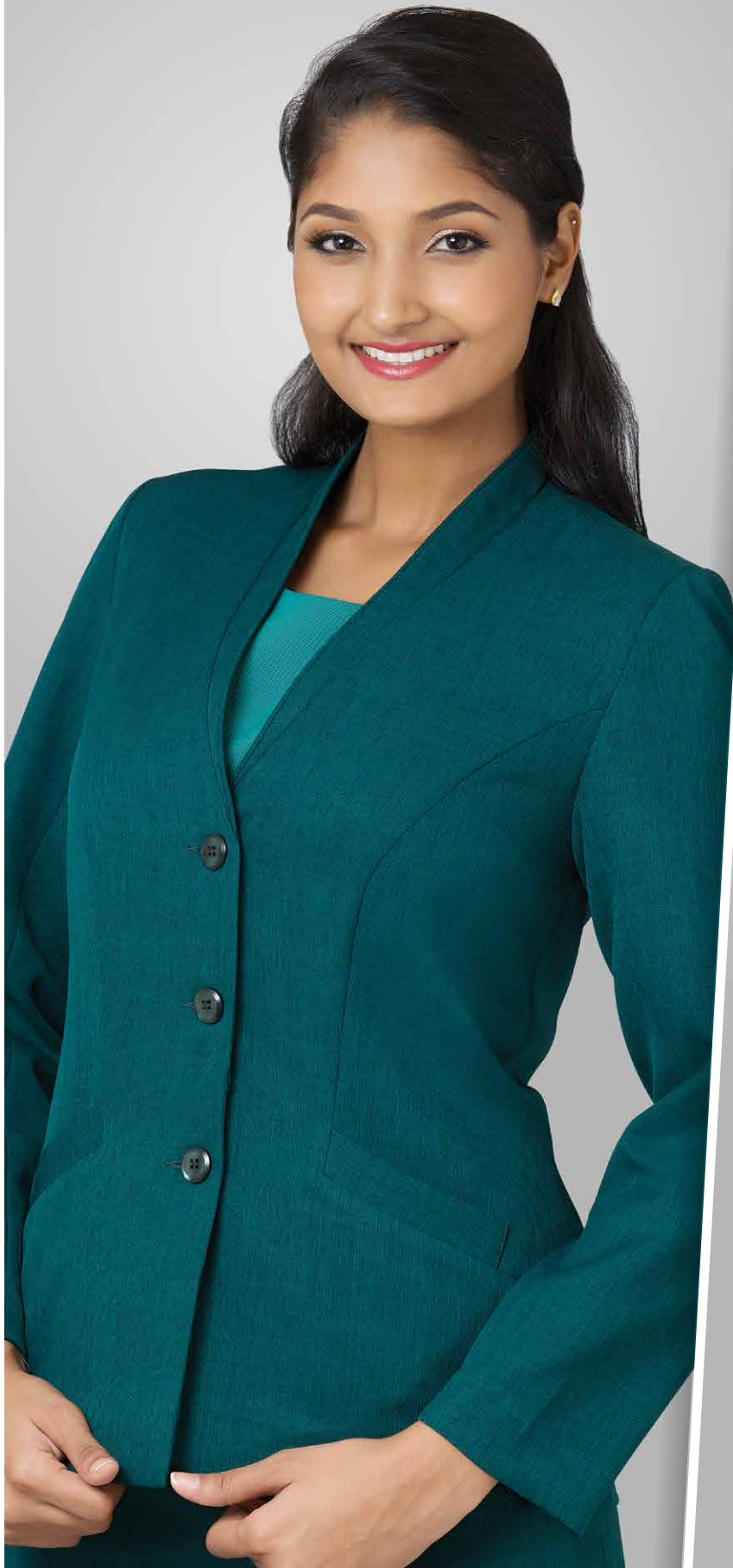


A woman with dark hair pulled back, smiling, stands on a wooden balcony or deck. She is wearing a teal-colored business suit consisting of a blazer and a knee-length skirt. She is also wearing light-colored, high-heeled pumps. Her right hand is resting on a wooden railing. The background is a lush forest with tall trees and green foliage. The lighting is soft, suggesting an overcast day or late afternoon. The overall mood is professional yet elegant and natural.

GREEN WITH ENVY

*This jewel tone
is more alive
than ever this
year, making
it a great
addition to
your corporate
wardrobe.*

EMERALD CITY



16

JANOURAS

TONES OF TEAL

RENAISSANCE



**WAISTCOAT + BLOUSE + PANTS =
MOTIVATED MONDAY**



**JACKET + BLOUSE + PANTS =
TURN IT UP TUESDAY**



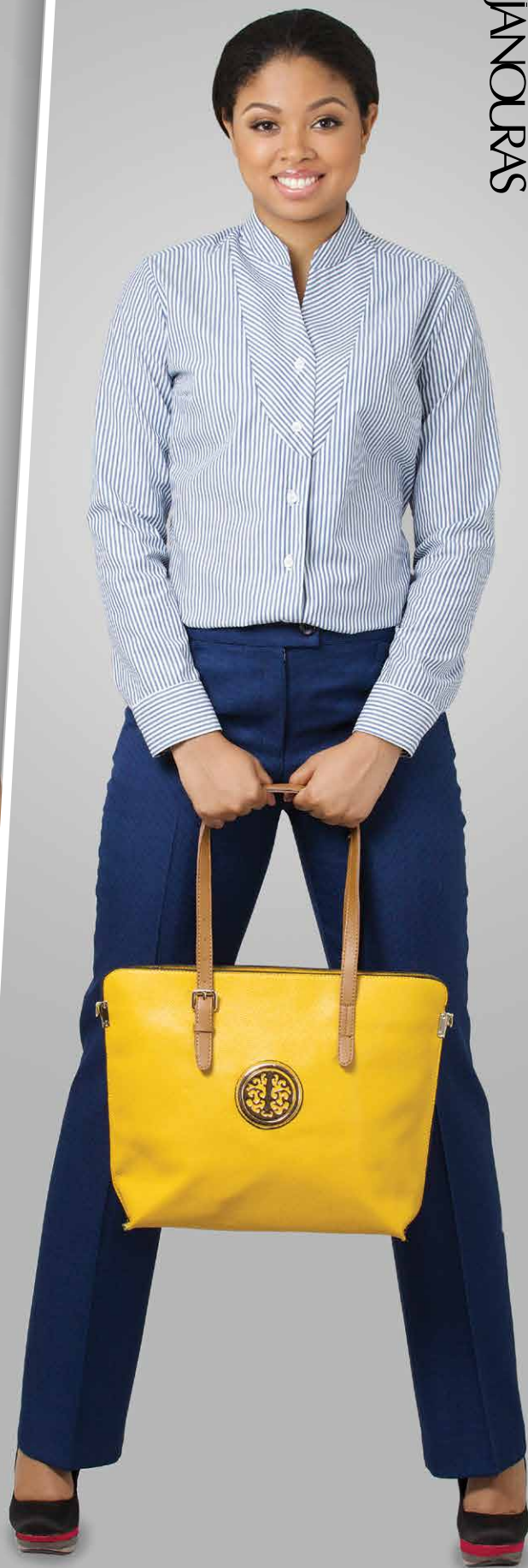
**JACKET + INNER TOP + SKIRT =
WORKAHOLIC WEDNESDAY**



DRESS + JACKET = TRENDY THURSDAY



BLOUSE + PANTS
= FASHIONABLE FRIDAY



HINT OF PRINT





COLOUR CODE



*Get hooked on
this promotion -
worthy **LOOK!***

We use a hook and eye detail
instead of the traditional button
along with a subtle contrast to
create this statement blazer.

POWER OF
APPEARANCE



TOP

DISTINCTION

*Relaxed Tailoring!
Our collection
offers a range of
inner tops that
fit and flatter
everyone – easy to
wear and effortless.*



FINE
LINE



COLOUR CODE

30

JANOURAS



A woman with dark hair and pink lipstick stands in a lush garden. She is wearing a navy blue short-sleeved blouse with a keyhole detail at the collar and a grey, textured, knee-length skirt. She is looking off to the side with a slight smile. The background is filled with green foliage and trees.

KEYHOLE TO SUCCESS

This dainty detail is more modern than ever. Our keyhole blouse paired with a contemporary piped skirt is ideal for the busy professional.



The classic blouse is reinvented using a geometric print.



EXPRESSION

PRISTINE

34

JANOURAS



CAREER GIRL

JANOURAS ON TREND:

*A corporate spin
on the popular
Safari-Inspired
shirt.*



FANCIFUL



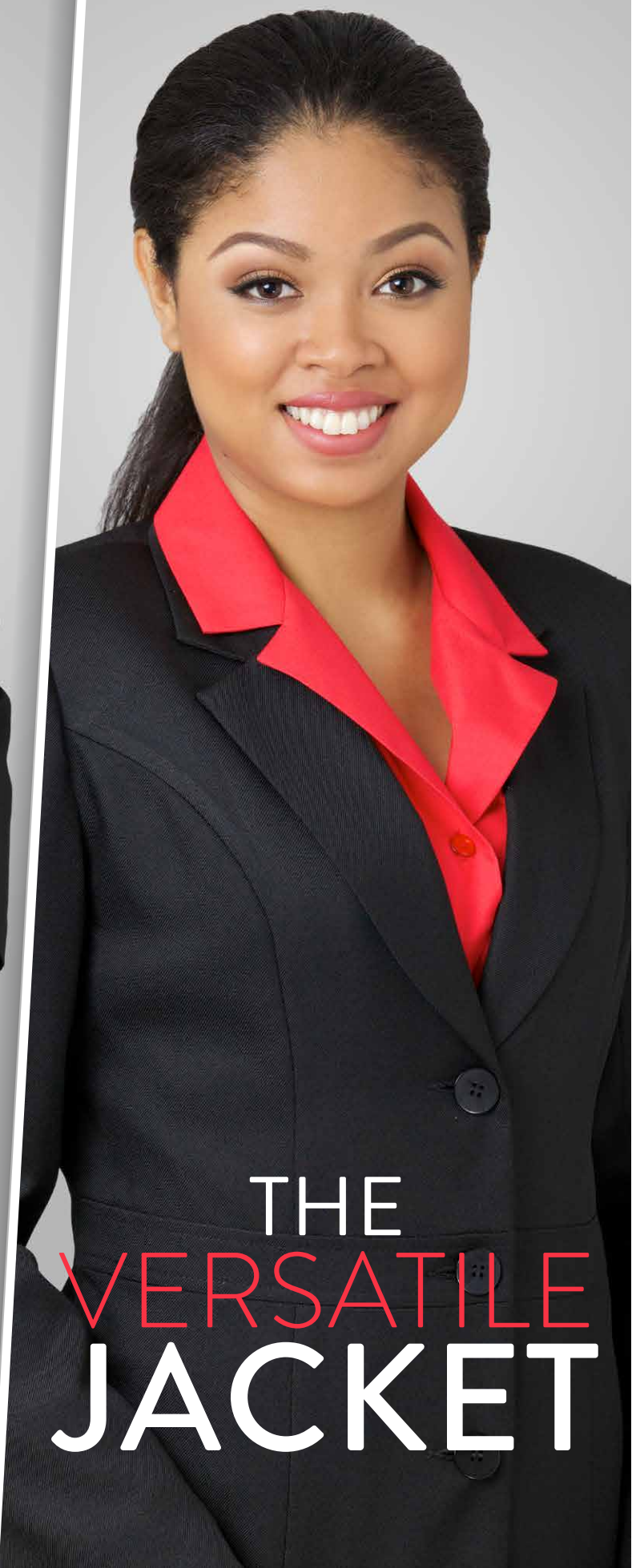
JAVA



*Using complementary **COLOURS**, these simple pieces are reinvented to make an effective **STATEMENT** on their own.*







THE
VERSATILE
JACKET



*Nothing can beat a **GREAT** jacket.
Worn buttoned, or open, the 3-button jacket complements a variety of
inner pieces; adding interest and **EXCITEMENT** to your uniforms.*

A woman with dark hair and a gentle smile stands leaning against the trunk of a large, textured tree. She is wearing a dark green, double-breasted blazer with two buttons and a matching knee-length pencil skirt. Her hands are resting on her hips. She is also wearing white pointed-toe pumps. The background is a soft-focus view of a dense forest with green foliage and trees under a bright sky.

THE PINES



*Take your tailoring to a **NEW** level!
This jacket has strategic seaming detail that controls fit.
We love this **BIGGER** button detail.*

BAJA



CLASSIQUE



*Streamline your look
with **ZIPPED** options.*



ZIP LINE



FIESTY



46

JANOURAS



www.janouras.com

POWER POINT



DISCOVERY



48

JANOURAS



www.janouras.com

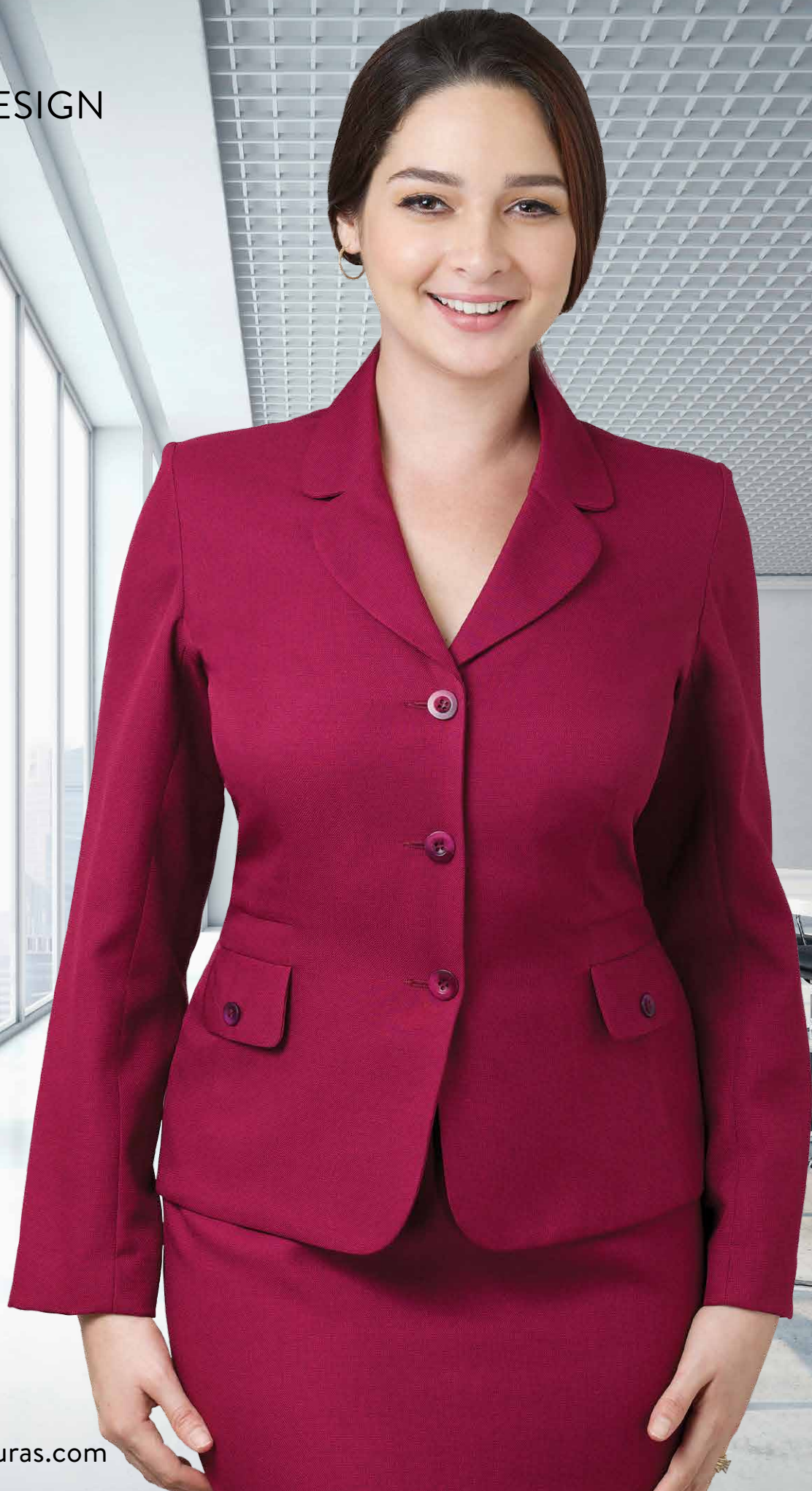




DOUBLE DUTY

*A twist on the
traditional
DOUBLE-
BREASTED
treatment.*

REDESIGN



*Colour co-ordinating does not have to be **BORING**. A bright pop of colour to accentuate a print can make a **WORLD** of difference.*



AZTEC
IMAGE



IN CHARGE



www.janouras.com

FLARE PLAY





A flared dress in vibrant colours is always figure-flattering and feminine.

ON
POINT



SOFT SPOT



WRAP WORKS



PRINT PREVIEW





JANOURAS

42-46 Sackville Street
Port of Spain, Trinidad, W.I.

Tel: (868) 625-2525

Fax: (868) 625-4175

E-mail: sales@janouras.com

www.janouras.com